



Job Name: _____

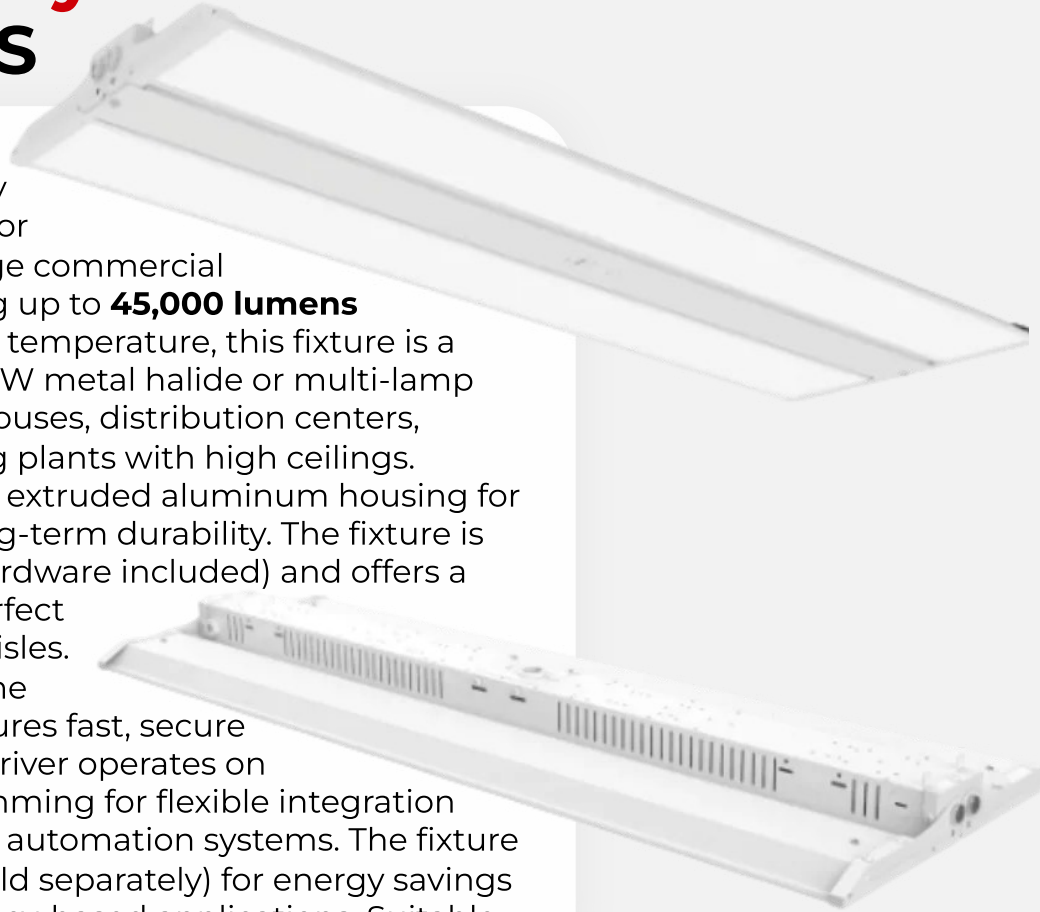
Type: _____

Part #: _____

Notes: _____

4ft LED Linear High Bay Fixture 300 WATTS

The ALS-T5K3-300W-4FT-5K-D is a dedicated-output, high-efficacy LED linear high bay engineered for maximum-output lighting in large commercial and industrial facilities. Delivering up to **45,000 lumens** (150 lm/W) at a crisp **5000K** color temperature, this fixture is a robust LED replacement for 1000W metal halide or multi-lamp T5HO high bays—ideal for warehouses, distribution centers, gymnasiums, and manufacturing plants with high ceilings. This model features a low-profile, extruded aluminum housing for superior heat dissipation and long-term durability. The fixture is designed for chain mounting (hardware included) and offers a wide, even light distribution—perfect for open floor plans and racked aisles. The integrated junction box on the back streamlines wiring and ensures fast, secure installation. The high-efficiency driver operates on 120–277V and supports 0–10V dimming for flexible integration with lighting controls or building automation systems. The fixture is motion sensor ready (sensor sold separately) for energy savings and code compliance in occupancy-based applications. Suitable for dry and damp locations.



Ordering Information



Example: ALS-T5K3-300W-4FT-5K-D

MODEL	Wattage
ALS-T5K3	300W-4FT-5K-D

Options - Shown on page 3

- ALS-HD07VR-MH - Plug 'n Play Motion Sensor
- ALS-T5K3-PM - Pendant Mount (with knockouts)
- ALS-HB-RC - Motion Sensor Programing Remote



Job Name: _____

Type: _____

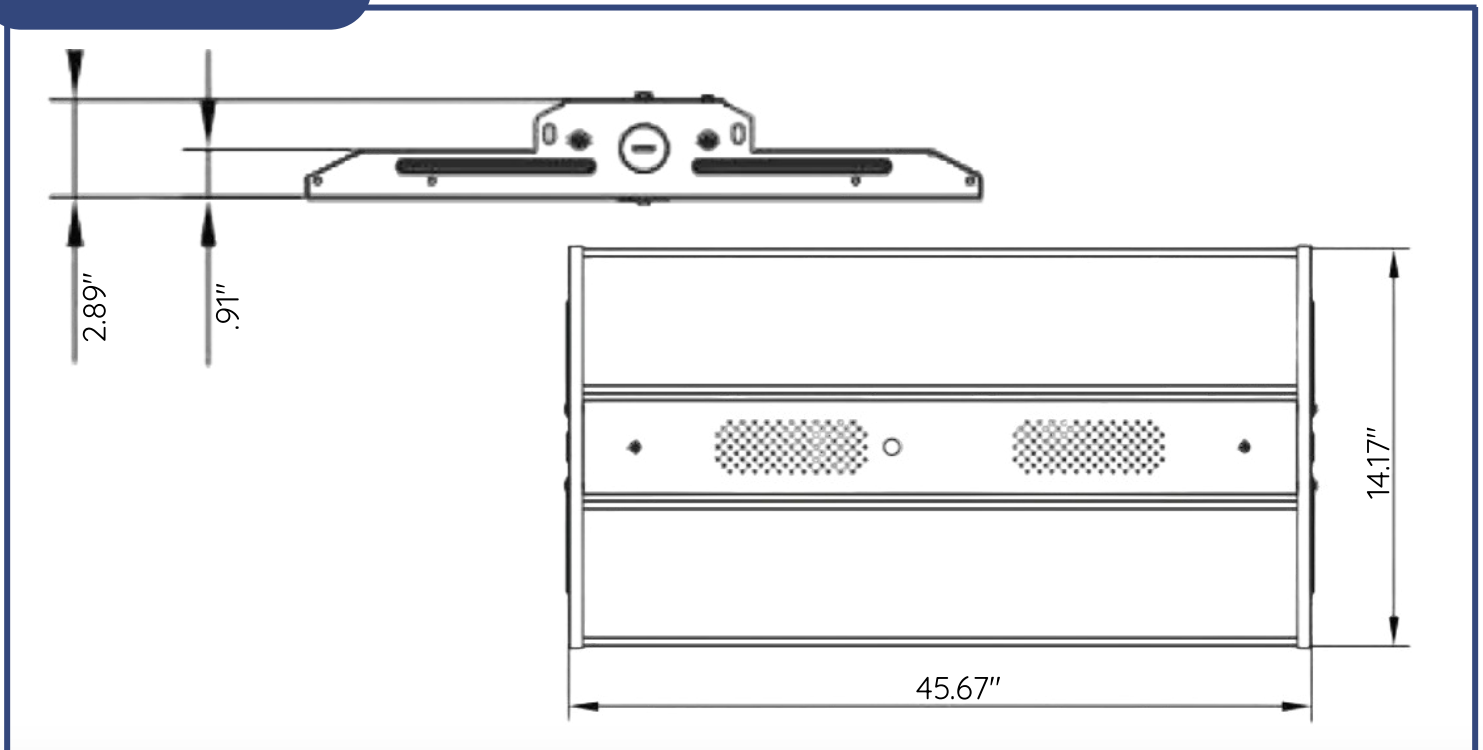
Part #: _____

Notes: _____

General Specifications

Wattage	300W	Lumens per Watt	150 Lm/w
AC Input	AC 120-277V	Total Lumens	45000Lm
IP Rating	IP20	Color Temperature	5000K
Finish	White Powder-Coat	Housing Material	Aluminum Alloy
Dimming	0-10V Dimmable	LED Chips	SMD2835
Driver	Sosen	Certifications	UL, DLC 5.1 Premium
CRI	Ra 70	Distribution	90°
Lens Type	Frosted/120	Working Temperature	-40°F~113°F
Weight	14 Lbs	Dimensions	14.17" x 45.67" x 2.89"
Luminary Life	50,000 Hour Rated	Warranty	5 Years

Dimensions



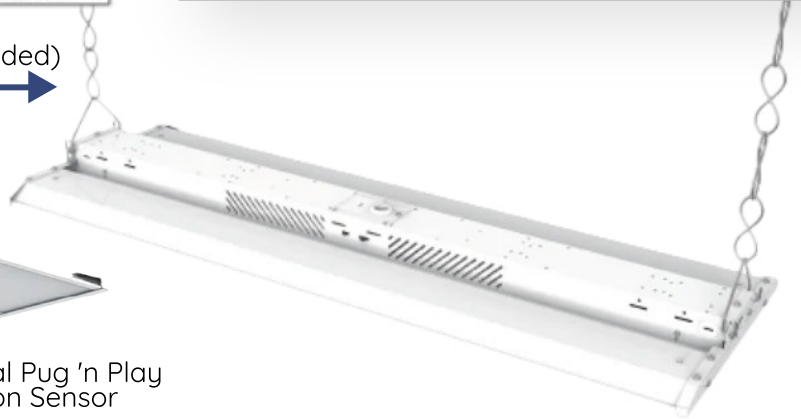
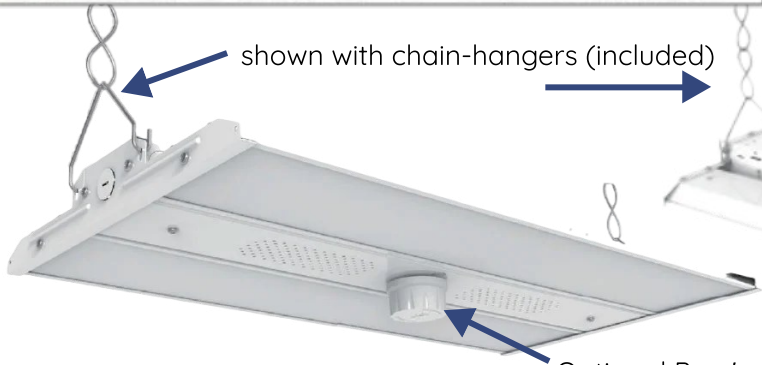


Job Name: _____

Type: _____

Part #: _____

Notes: _____



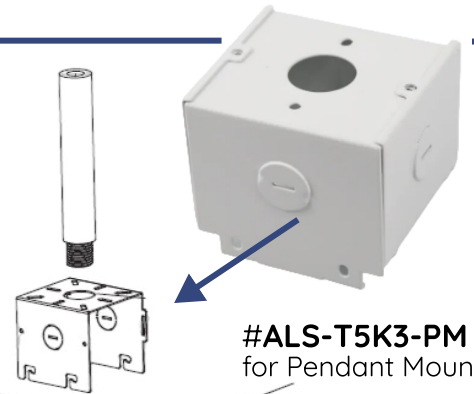
Optional Pug 'n Play Motion Sensor

OPTIONS

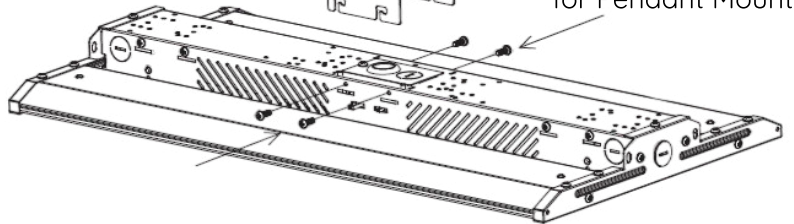
#ALS-HD07VR-MH
Motion Sensor



#ALS-HB-RC
Motion Sensor Remote



#ALS-T5K3-PM
for Pendant Mount



Applications

